

# VALUTAZIONE DEL COMFORT TERMOIGROMETRICO

Inputs for Energy Balance

PMV Index

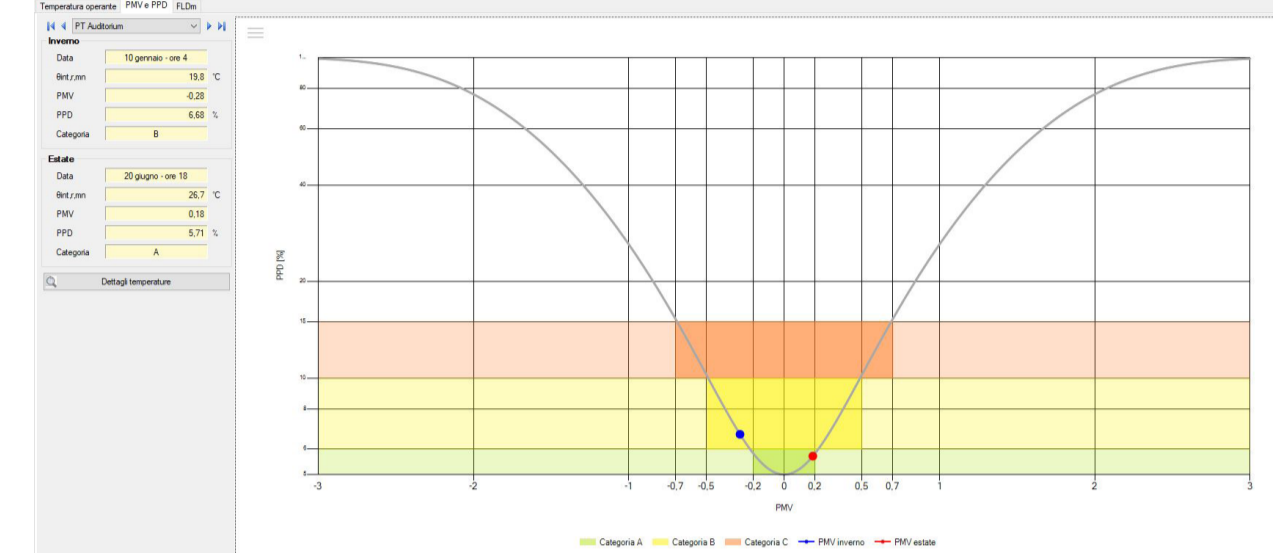
- Metabolic Rate
- Clothing Insulation
- Air Temperature
- Air Velocity
- Mean Radiant Temperature
- Relative Humidity



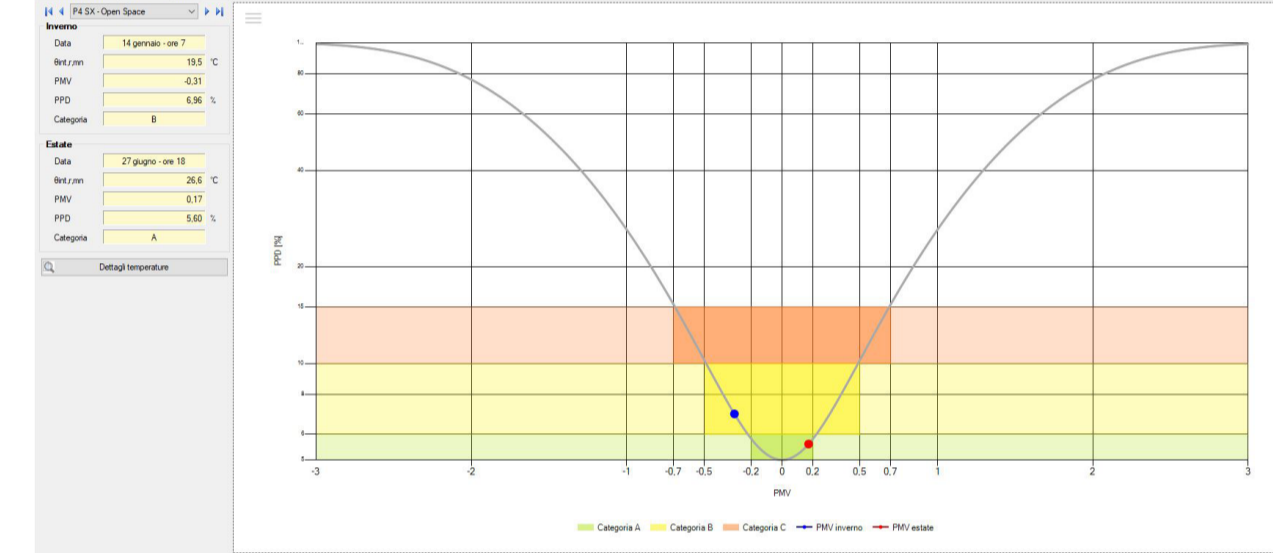
+3	Hot
+2	Warm
+1	Slightly Warm
0	Neutral (Comfort)
-1	Slightly Cool
-2	Cool
-3	Cold

Il comfort ambientale viene espresso attraverso i parametri PMV (Voto medio previsto) e PPD (Percentuale prevista di insoddisfatti), valutata ambiente per ambiente. Si rispetterà la normativa CAM e verrà garantita almeno la Classe B. Si riportano a seguire i valori calcolati per alcuni ambienti della Terza Torre.

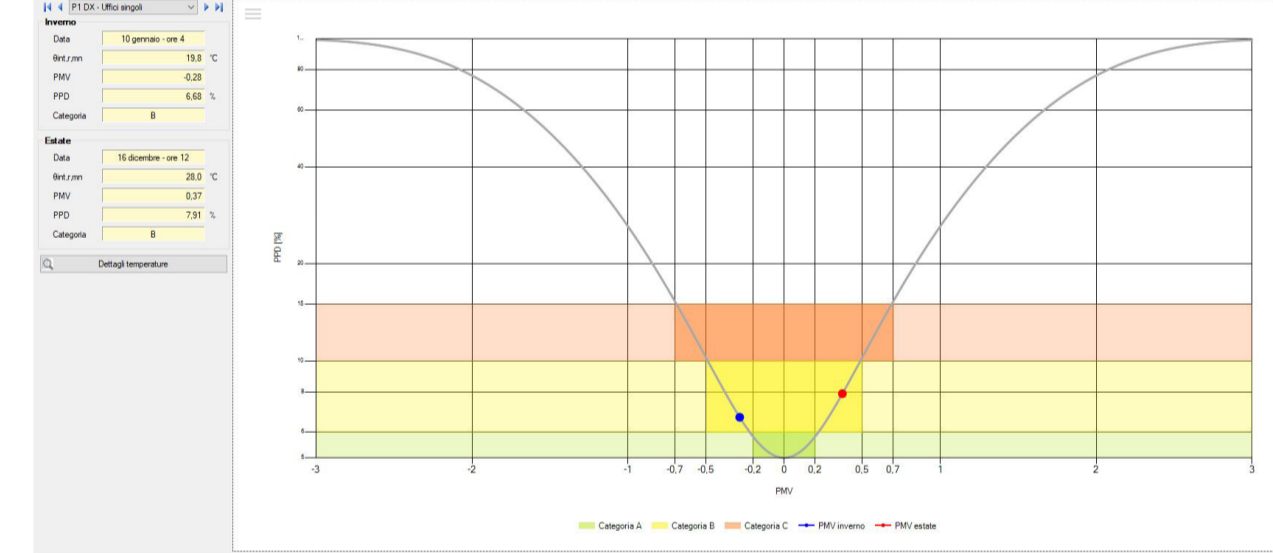
AUDITORIUM PT



UFFICI OPEN SPACE - P4 SX



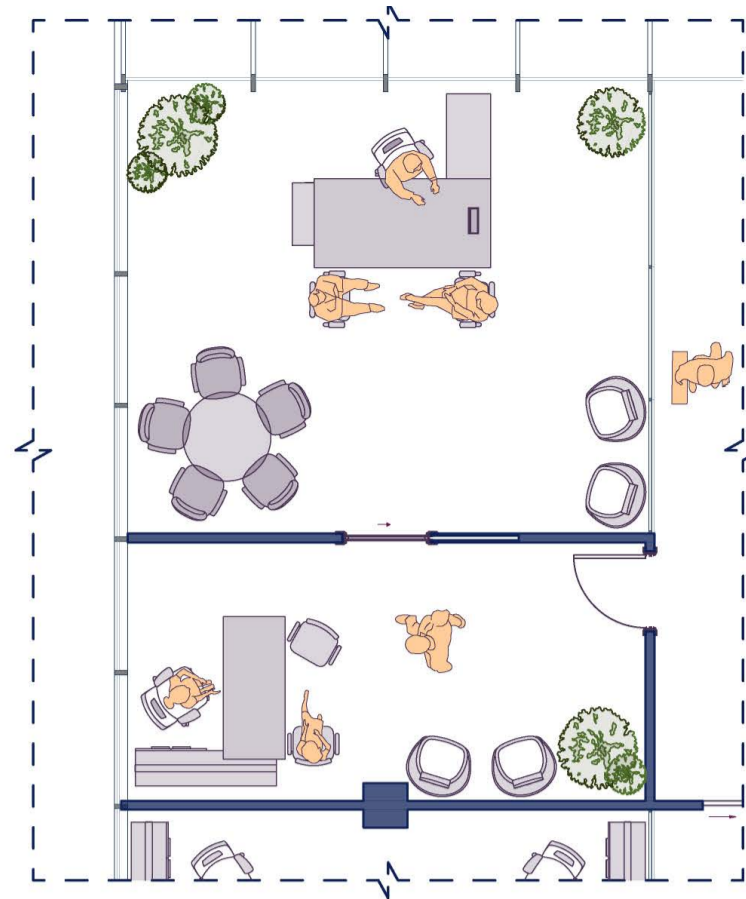
UFFICI SINGOLI - P1 DX



# CONFIGURAZIONI SPAZIALI DEGLI UFFICI

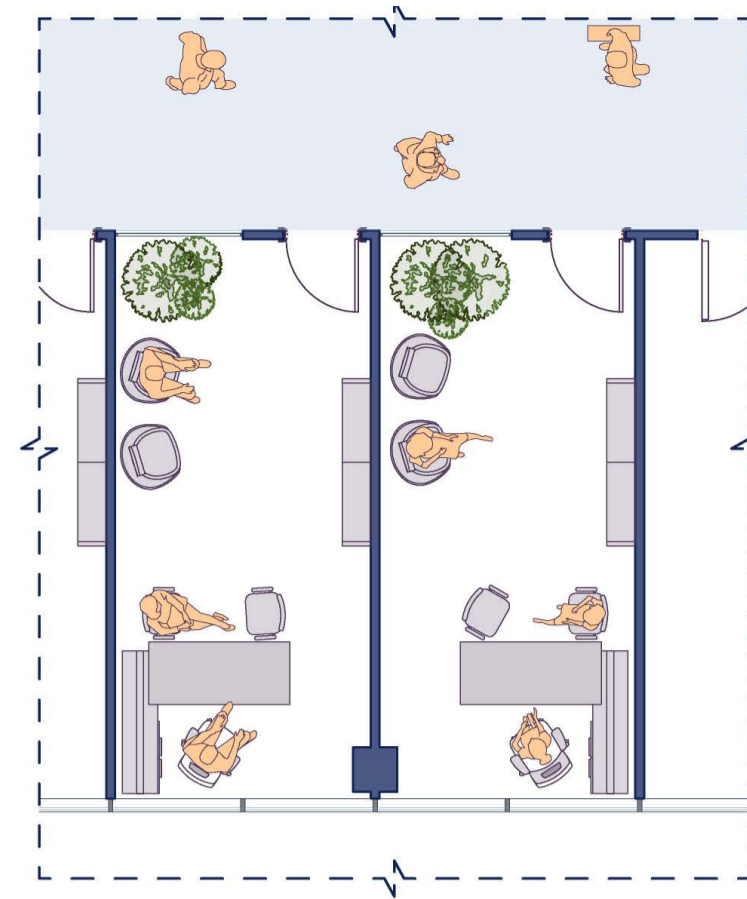
1

ufficio manager



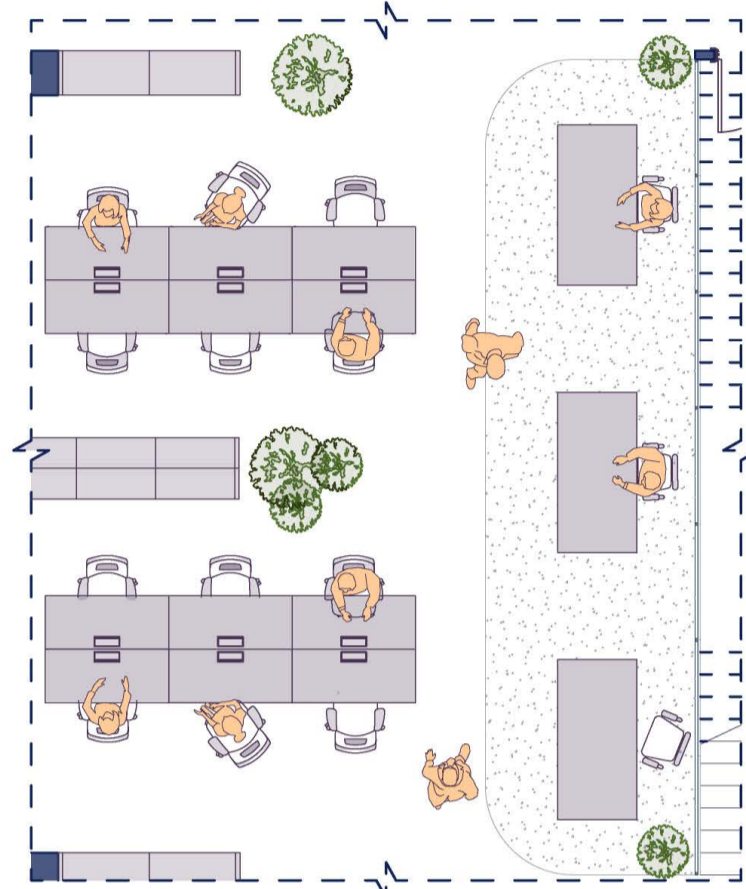
2

uffici singoli



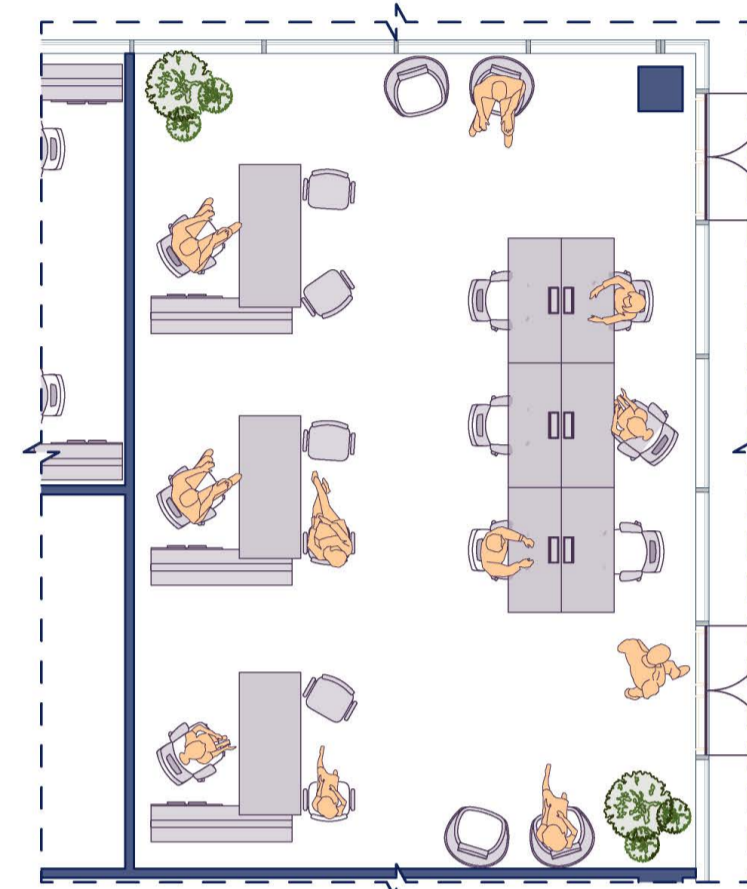
3

open space 01



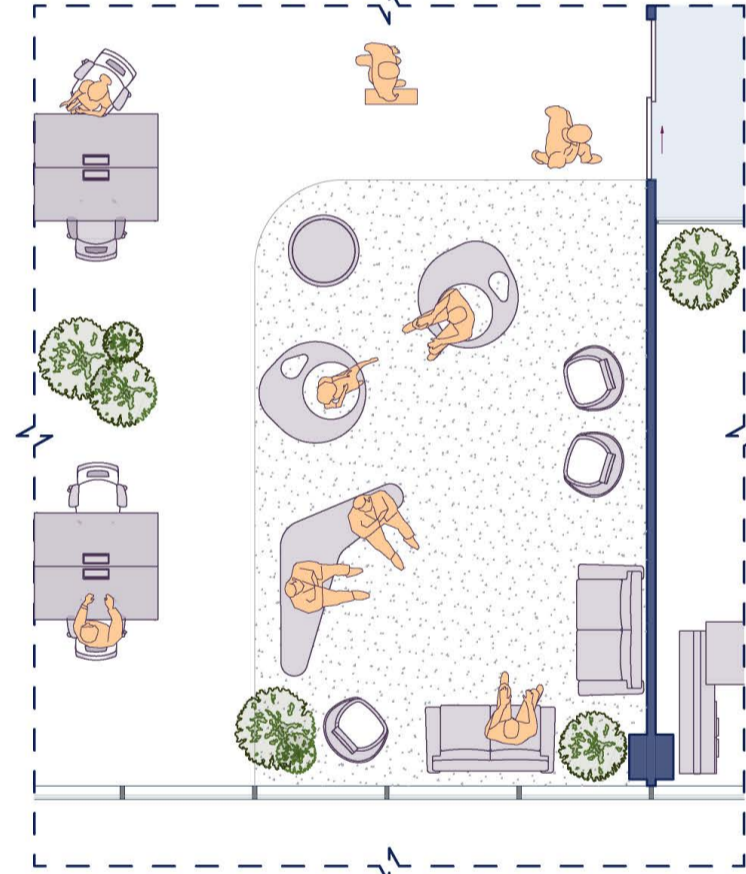
4

open space 02



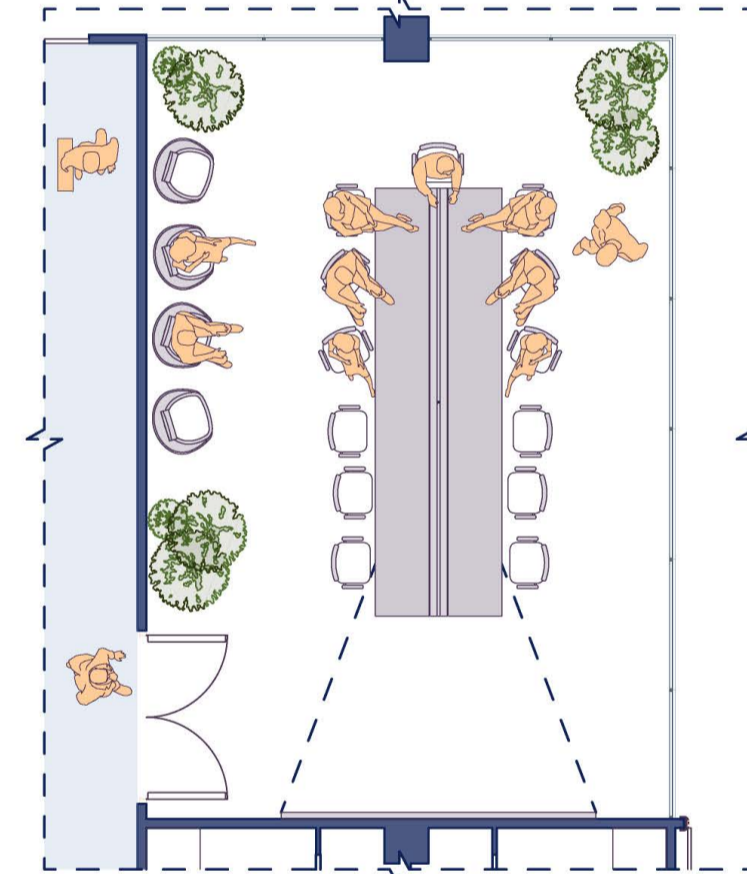
5

area break

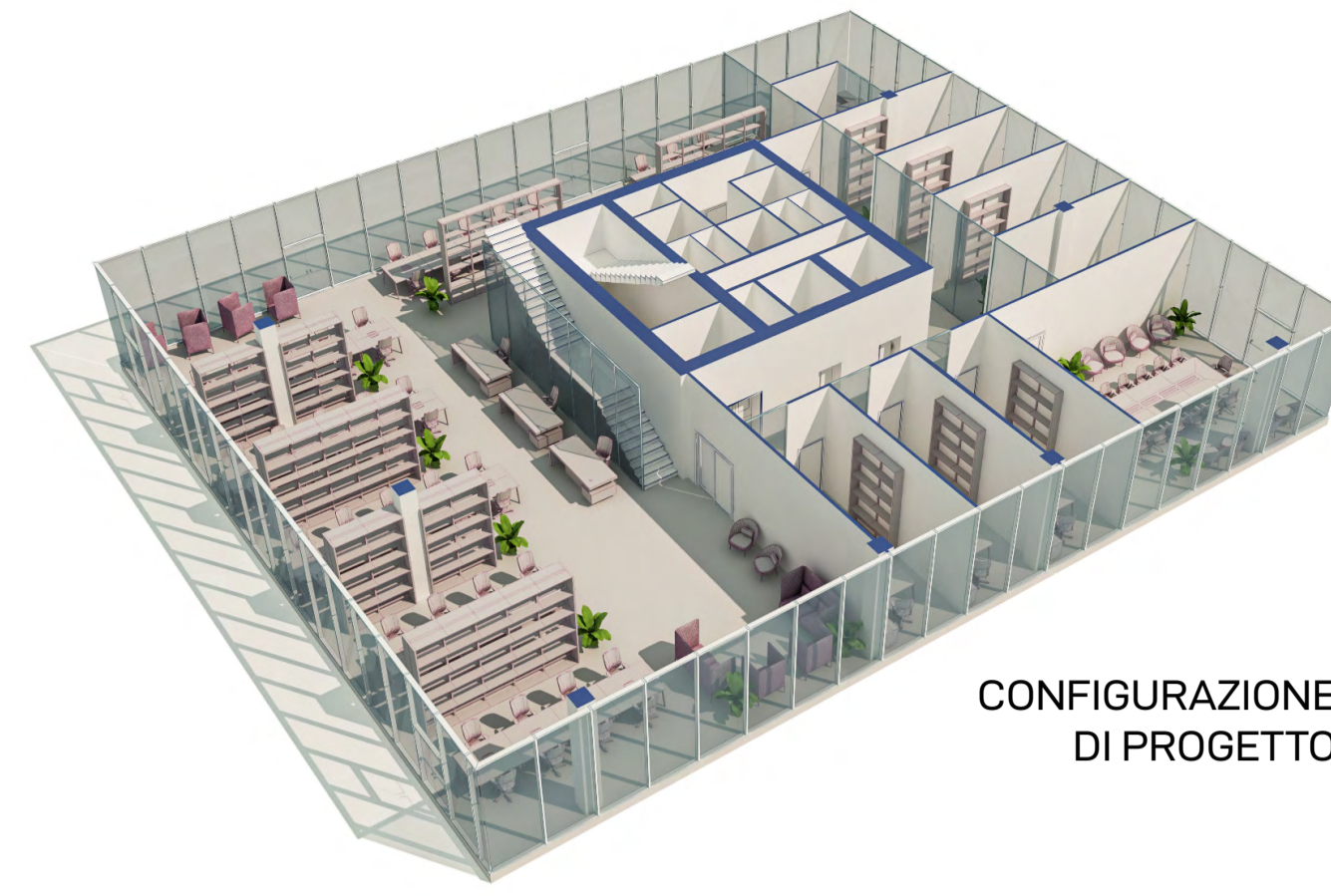


6

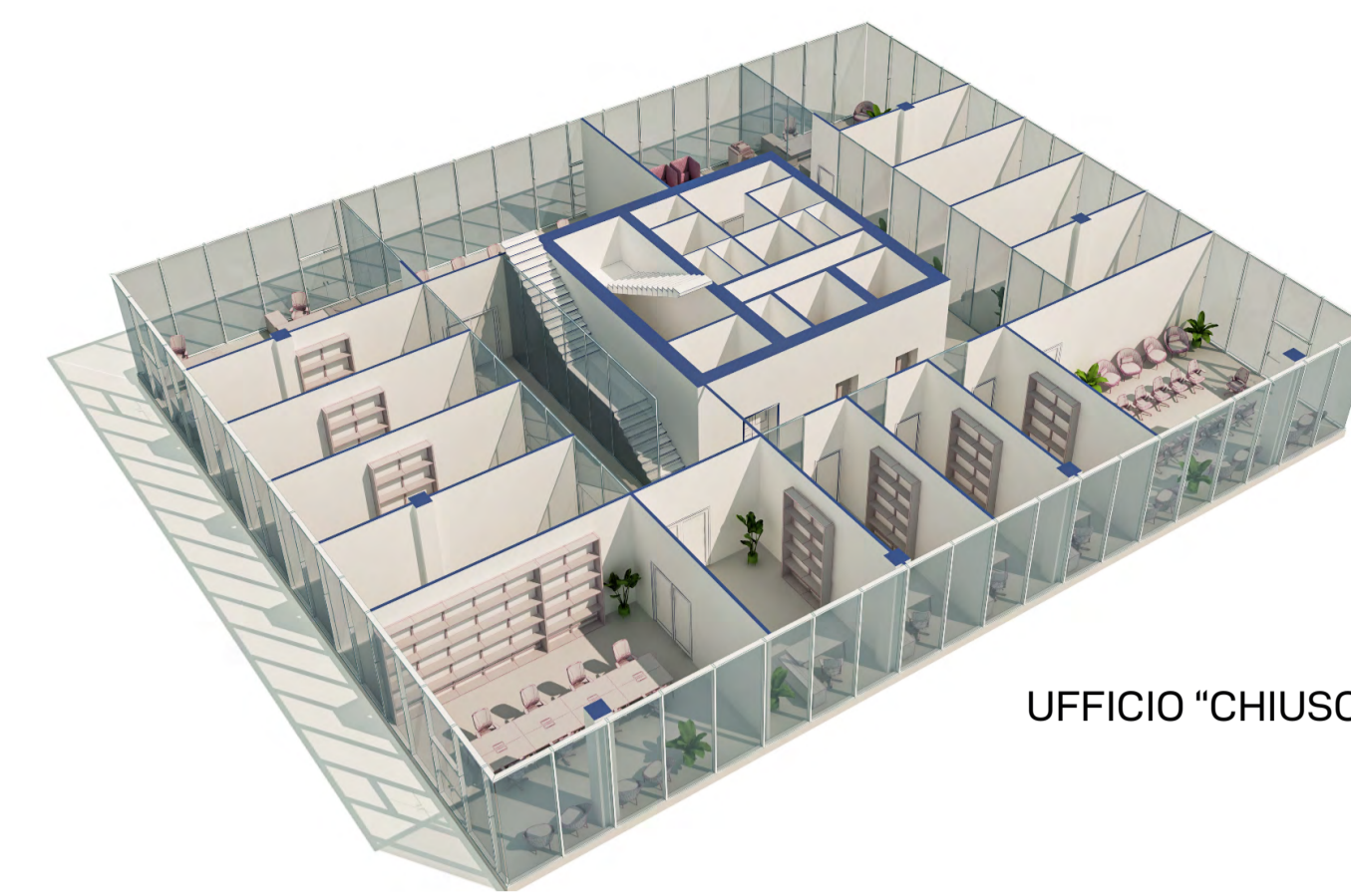
meeting room



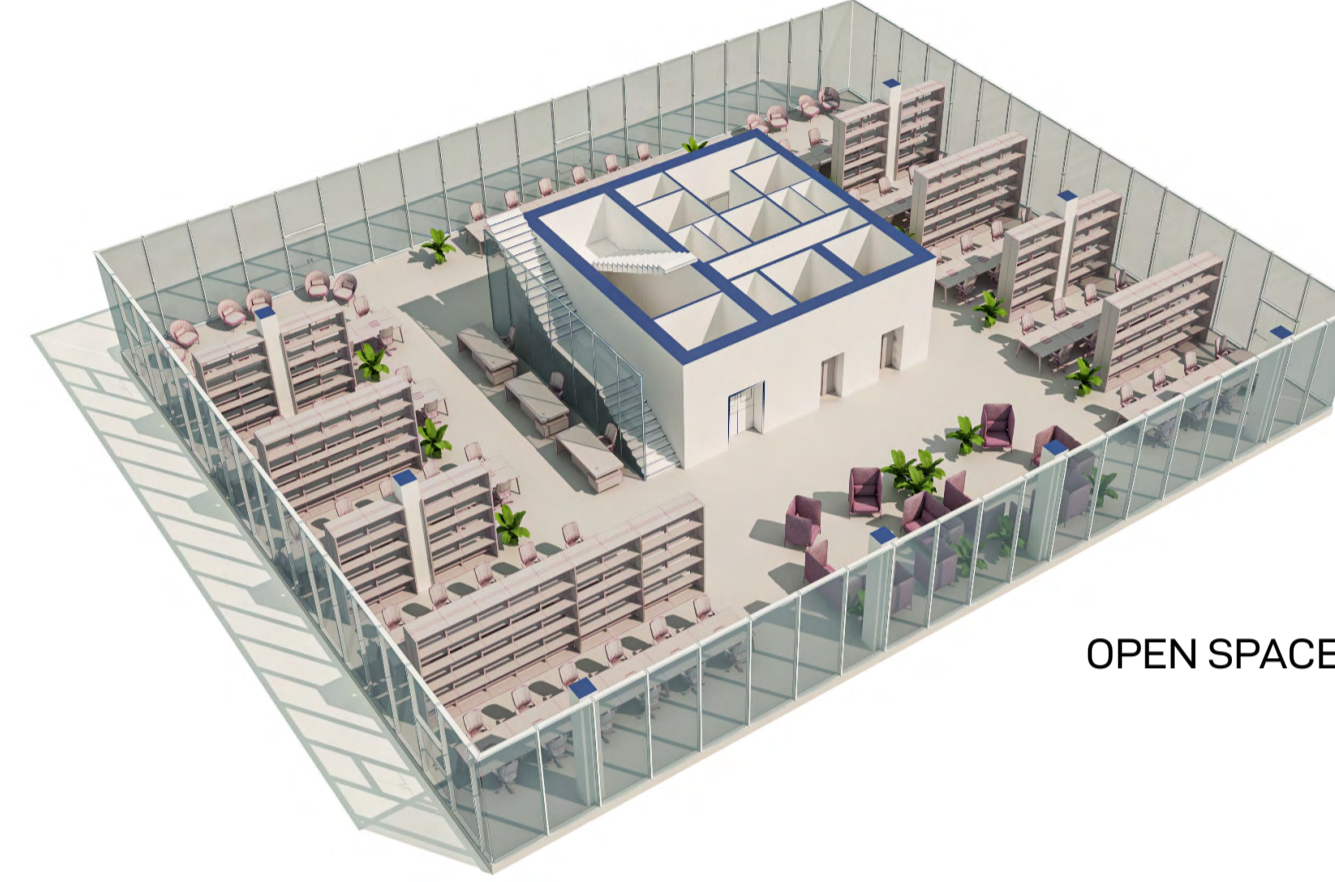
# FLESSIBILITÀ DEGLI UFFICI DI TIPO E



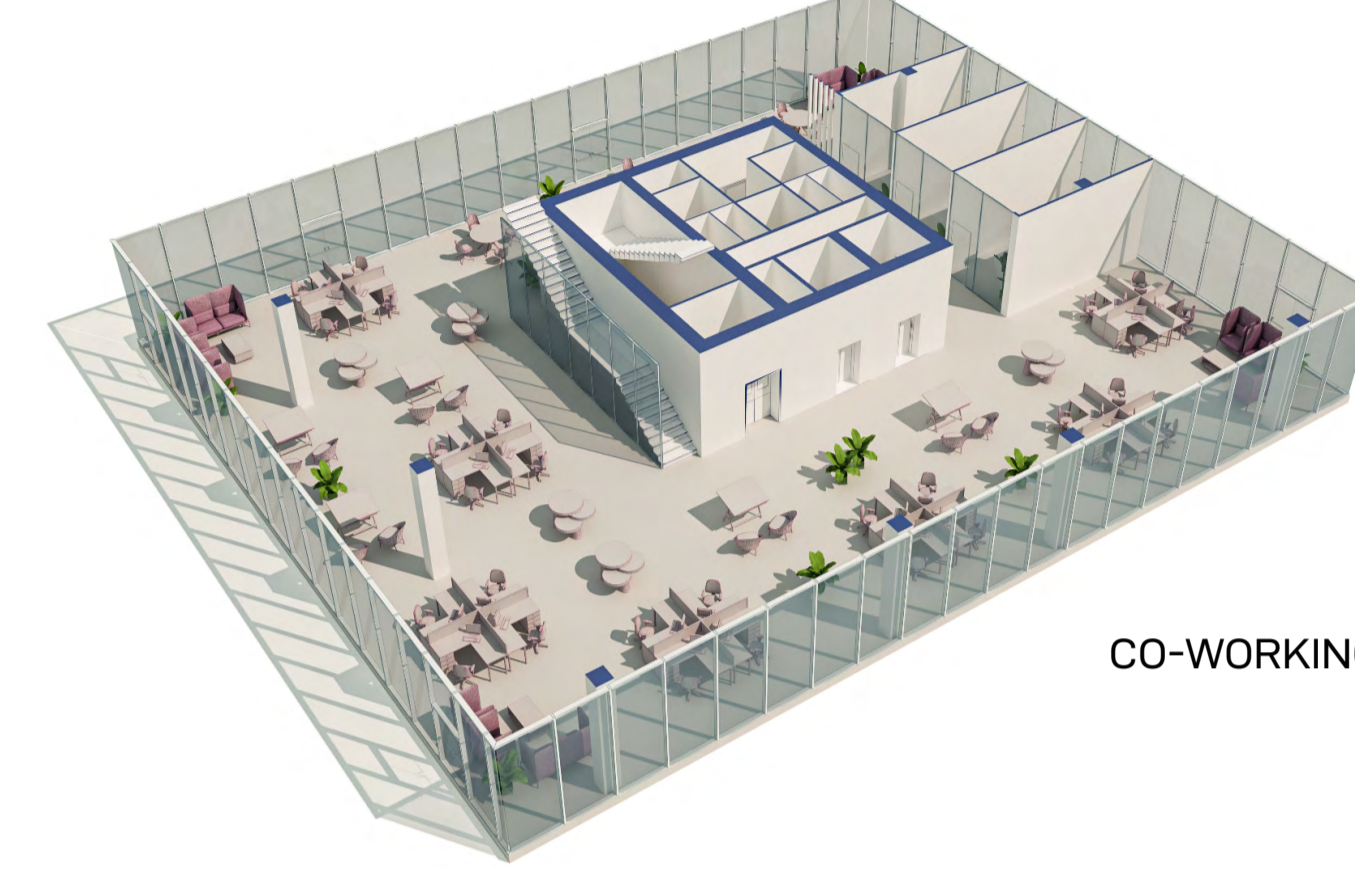
CONFIGURAZIONE DI PROGETTO



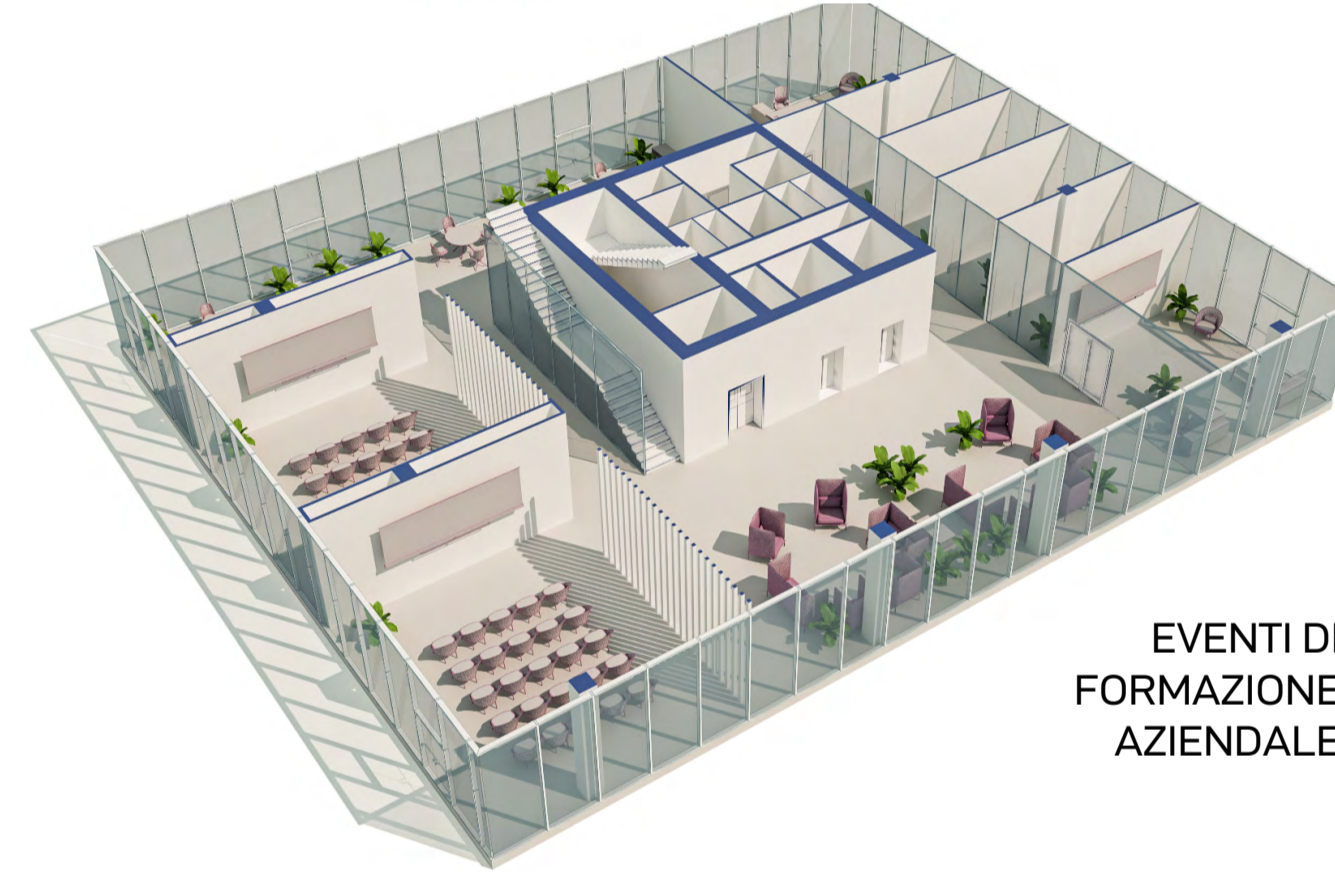
UFFICIO "CHIUSO"



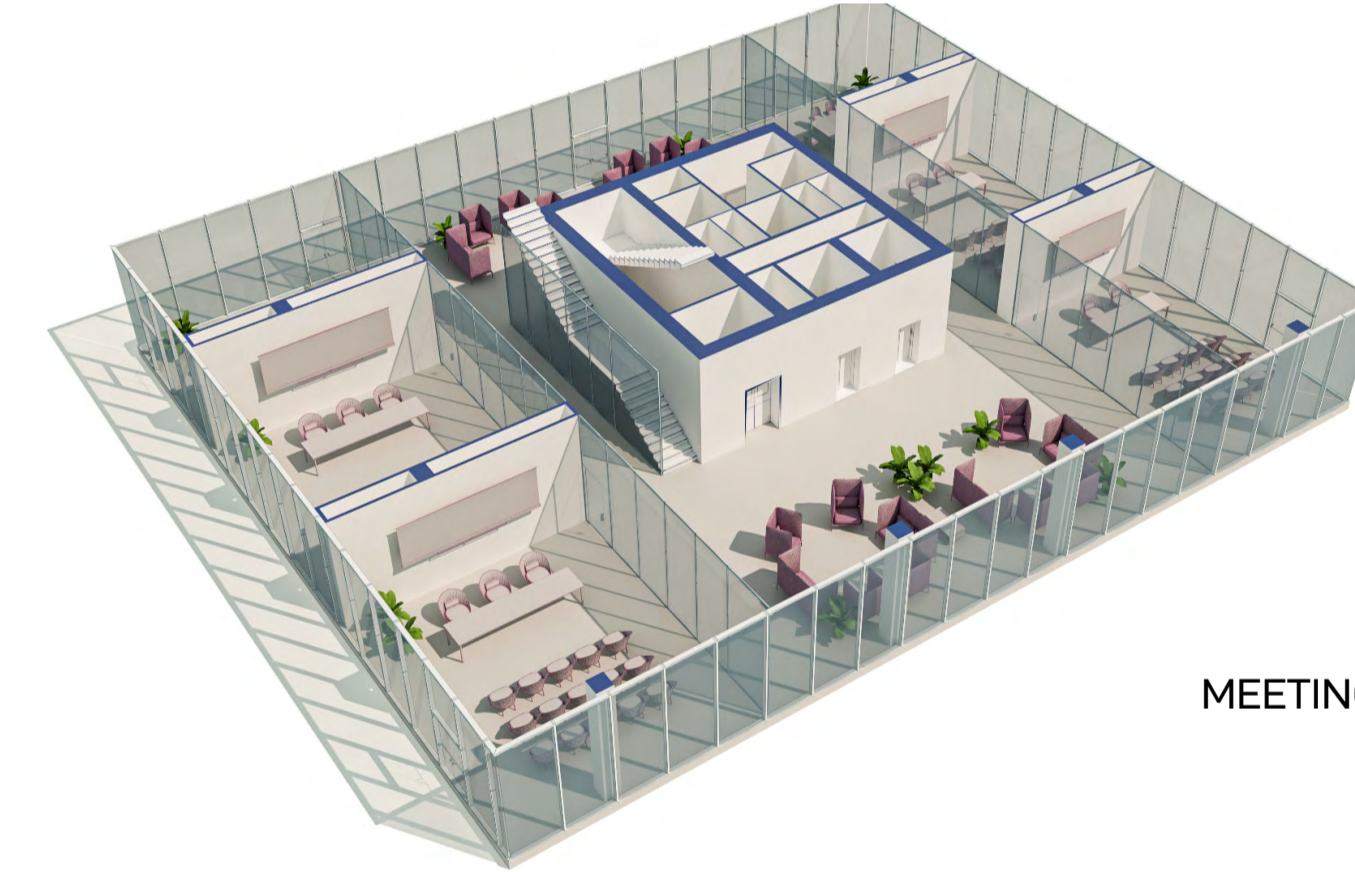
OPEN SPACE



CO-WORKING



EVENTI DI FORMAZIONE AZIENDALE



MEETING



Terza Torre - la Hall



Terza Torre - il bar / ristorante



Terza Torre - gli uffici "open space"